

Clinical History

41M presented with 10 weeks of

- Fevers
- Drenching night sweats
- 7kg weight loss
- Arthralgia of L knee and hip.

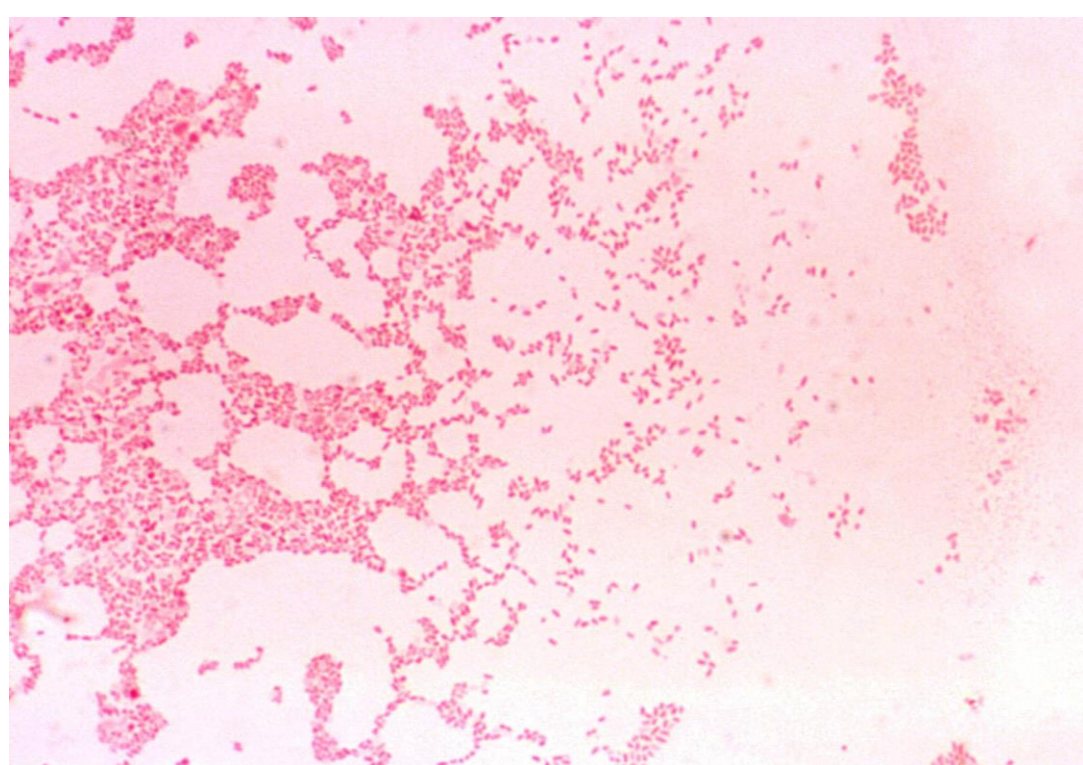
Visited family in Hargesia, Somaliland 18m previously.

Exam: T 39c, HR 105, BP 112/70

Investigations

WCC (Neut)	3.8 (1.3)
Platelets	51
ALT	74
CRP	38

CT TAP: Moderate splenomegaly



Blood cultures (day 3)

'Maggaabo geel, gelin dhan bay ku waddaa'
(a mouthful of camel's milk keeps you going for half a day)



Brucellosis Summary (1)

- Commonest Zoonosis – 500,000 cases/year
- Unpasteurized dairy intake or direct contact with infected animal
- Gram-negative, facultative intracellular coccobacilli
- Endemic in many developing countries but incomplete data
- During acute illness, *Brucella spp* enter the circulation and can seed anywhere - usually reticulo-endothelial system (RES).
- Can form granulomas causing relapses or chronic infection.
- Symptoms can be acute (undulant fever, flu-like), insidious, chronic or localized to a specific focus.

Diagnosis:

Direct culture of *Brucella spp*.

4 fold rise in *Brucella* antibody titre taken > 2 weeks apart

Our patient: Prolonged incubation period or relapsed infection? 🤔

Brucellosis has a variable incubation period (usually 2-4 weeks but can be up to 6 months)

Our patient – no potential brucella contact in 18 months?

Relapse is associated with a rise in ELISA IgG not IgM.

Serology (Brucella reference Unit, Liverpool)

- 1) Brucellacapt (Total IgG/IgM) >10240
- 2) Brucella ELISA IgG 160
- 3) Brucella ELISA IgM >2560
- 4) Brucella PCR assay ***Brucella spp***

Morphological identification (Animal and Plant Health Agency, Surrey)

***Brucella melitensis* biovar 1**

Brucellosis in Somaliland?

In Somali culture, camel ownership holds significant social status. (2)

In Somali language - 46 different words for camel.

Camel milk is recognised as having high nutritional value in the Horn of Africa.

Limited data on Brucellosis, Small studies suggest prevalence in camel population



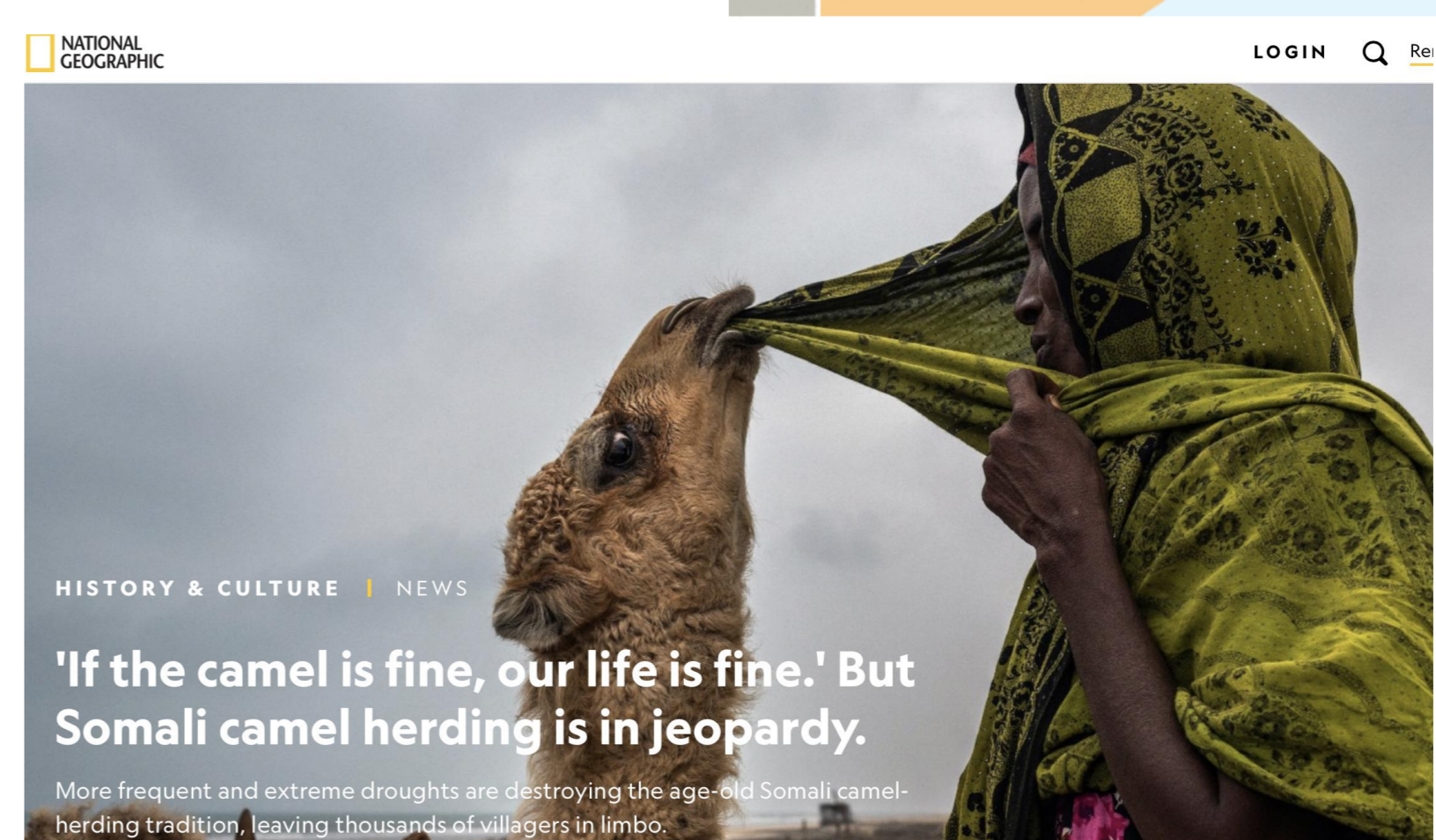
Headache and neck stiffness..... ? **Neurobrucellosis**

LP: WCC 5 (100% lymph)

CSF Brucellacapt and Brucella PCR negative

Treatment

Ceftriaxone 2/52, Doxycycline and Rifampicin 6/52
Full recovery within 2 months



HISTORY & CULTURE | NEWS

'If the camel is fine, our life is fine.' But Somali camel herding is in jeopardy.

More frequent and extreme droughts are destroying the age-old Somali camel-herding tradition, leaving thousands of villagers in limbo.

(1) WHO: Brucellosis in humans and animals 2006
(2) National geographic, May19 2021